

INQUIRIES ON PROVINCIAL TAXATION AND YOUR PROVINCIAL TAX NOTICE:

Please contact Surveyor of Taxes
Toll-free: 1-888-355-2700
Or: 250-387-0555

The Property Taxes website has information on homeowner grants, the tax deferment program as well as other valuable tax information.

www.sbr.gov.bc.ca/rpt

INQUIRIES ON RDN SERVICES PROVIDED AND INCLUDED ON THE PROVINCIAL TAX NOTICE, CONTACT:

RDN Finance
Toll-free: 1-877-607-4111
Or: 250-390-4111

Or visit www.rdn.bc.ca



REGIONAL DISTRICT OF NANAIMO (RDN) PROPERTY TAXES

You have just received your 2017 property tax notice from the province. The province collects taxes for schools, roads, policing and regional district services. The RDN receives a lump sum payment from the province in August each year. This lump sum payment goes directly toward the RDN services provided in your area.

SERVICES

The Regional District of Nanaimo provides a broad range of services to its residents, with the exception of road maintenance and policing. The services provided by the RDN include the following examples:



REGIONAL

- Solid Waste Management
- Regional Parks
- Regional Growth Strategy
- 911 Services
- Liquid Waste Management Planning
- Drinking Water/Watershed Protection
- Search & Rescue Contribution Services
- Grants-In-Aid
- Administration

SUB-REGIONAL

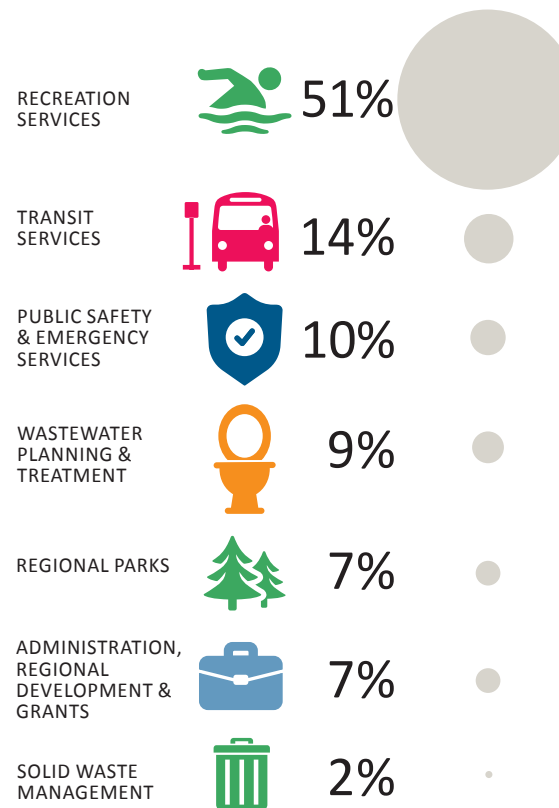
- Transit
- Wastewater Treatment
- Community Planning
- Economic Development
- Recreation Centres
- Community Justice Contribution Services
- Bylaw Enforcement
- Building Inspection
- Emergency Planning

LOCAL

- Fire Protection
- Water and Sewer Utilities
- Community Parks
- Street Lights

DISTRICT OF LANTZVILLE CONTRIBUTION TO REGIONAL DISTRICT OF NANAIMO

	2017	2016
District of Lantzville contribution to RDN property taxes total	\$813,398	\$806,894
Estimated RDN only portion General Services tax rate per \$100,000 of assessment	\$89.00	\$98.00
Lantzville Single Family Dwelling Average Assessment	\$443,000	\$404,000
Average Lantzville Property Tax Assessment from RDN	\$394.27	\$395.92
Change from prior year	-0.4%	



**Average residential values are based on BC Assessment 2017 Completed Roll Values and may vary as a result of revisions to the roll*



2017

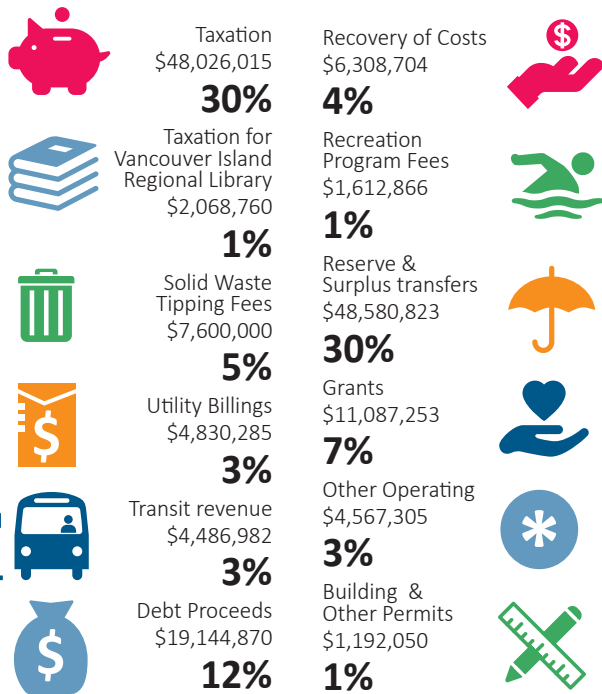
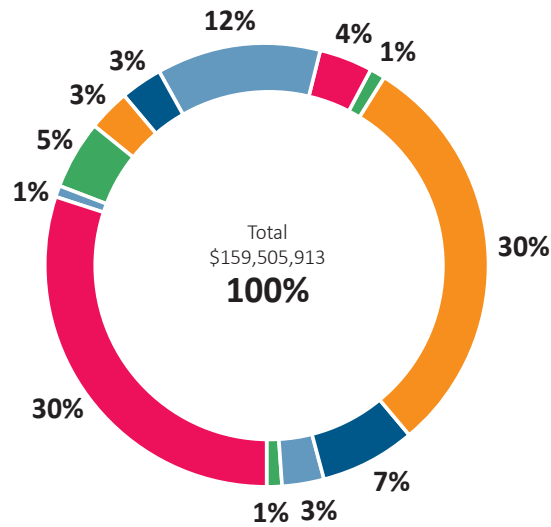
REGIONAL DISTRICT OF NANAIMO PROPERTY TAXES



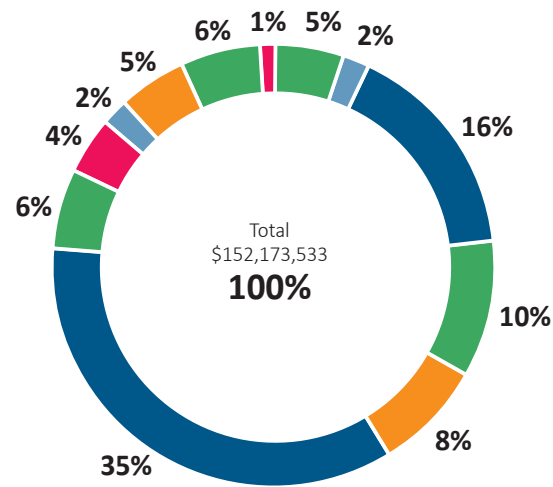
DISTRICT OF LANTZVILLE

THE RDN RECEIVES REVENUE FROM MULTIPLE SOURCES

WHERE DOES THE MONEY COME FROM?



WHERE DOES THE MONEY GO?



CAPITAL EXPENDITURES FOR 2017

THESE ARE THE RDN'S LARGEST INVESTMENTS IN THE COMING YEAR:

Wastewater Treatment	\$47,215,093
Water Services	\$6,105,527
Solid Waste/Regional Landfill	\$2,478,159
Fire Departments	\$1,479,500
Transit	\$2,277,550
Parks & Recreation	\$3,975,997

THE RDN IS ALSO WORKING ON OTHER MAJOR PROJECTS THAT MAY IMPACT YOUR AREA. THESE INCLUDE:

- Completion of the **Solid Waste Management Plan**
- Oceanside Area** Recreation Services Master Plan
- Regional Parks & Trails Service Review**
- Regional Parks & Trails Master Plan**
- Transit Service Expansion** September 2017
- Zoning Bylaw 500** Modernization
- Open data portal development for **public mapping information**
- Wildfire Interface Fuel Inventory Plans**
- Rural Community Signage** process & regulation review
- Morden Colliery** Regional Trail Design

NANAIMO REGIONAL HOSPITAL DISTRICT

The Nanaimo Regional Hospital District (NRHD) shares the same boundaries, directors and administrative staff as the Regional District of Nanaimo. The NRHD provides capital funding for:



Nanaimo Regional General Hospital
Dufferin Lodge
Eagle Park Lodge
Trillium Lodge
Oceanside Health Centre



Capital funding is cost-shared with the province on a 60/40 basis with the NRHD's portion being 40 per cent. Health care services on Vancouver Island are delivered by Island Health. Island Health pools both Provincial and NRHD funding, along with other sources such as foundations etc., to maintain, improve and build health care facilities.

The NRHD has adopted a 2017 budget of \$7.2 million resulting in a tax levy of approximately \$20.00 per \$100,000 of residential assessment. Included in the budget is \$3.4 million for capital equipment and minor projects and a \$1.8 million contribution to reserves to save for a major project such as a new patient tower at Nanaimo Regional General Hospital. Current capital projects underway include an Electrical Energy Plant upgrade and a pharmacy upgrade at the hospital.